

Important Links Below



Rio

[RIO Encore Ordering Link](#)

https://eventnow.encoreglobal.com/myevents/result/index/show_id/0955b784-2f80-ef11-ac20-6045bdd63ce7/

[RIO Encore A/V, Electrical, Internet, Rigging Ordering Link](#)

https://eventnow.encoreglobal.com/myevents/result/index/show_id/0955b784-2f80-ef11-ac20-6045bdd63ce7/



Rio

Exhibitor Marketing Kit



Easy Ordering

As the exclusive Technology Provider of Rio, Encore is committed to making your experience as easy and stress-free as possible.



Self-service option available through our online store – EventNow

Step 1

Visit [EventNow](#) and select 'I am planning an exhibit booth'

Step 2

Browse our technology catalog

Step 3

Select from a list of available products/product packages and service packages, then check out.*

- EventNow is only available more than two days prior to event load in. If ordering within two days, contact your onsite team

Once your order is completed, a confirmation email will be sent with all your order details and a dedicated professional will still be on-hand to answer any questions regarding your order.



offers a range of solutions for any exhibitor:

As the exclusive Technology Provider of Rio, Encore is committed to making your experience as easy and stress-free as possible.

- Large and small format HD monitors (40" monitors and above include floor stands)
- PC Based Laptops
- Various Audio Packages
- Wireless Presentation Controls
- HDMI Cables, Distribution Amplifiers, and Adapters
- Power Strips, Extension Cords, and Charging Station
- LED Lighting
- Flipchart Packages
- Power and Internet Connectivity Packages

NEED RIGGING

If so, please fill out rigging request, <https://www.encore-global.com/rigging-request/>

Encore representative will be in touch with you.

We make it easy



Easy ordering options



Confirmation email is sent with your order details



We regularly maintain and service all equipment



Encore delivers, installs, and tests equipment.



After the show, Encore picks up your rental equipment.



Need assistance or products/solutions not offered in EventNow?

Call your on-site contact directly:

Sheri Lyn Bacarro - Office Admin
Anthony Riccardelli - Director, Event Technologies

Rio@encoreglobal.com

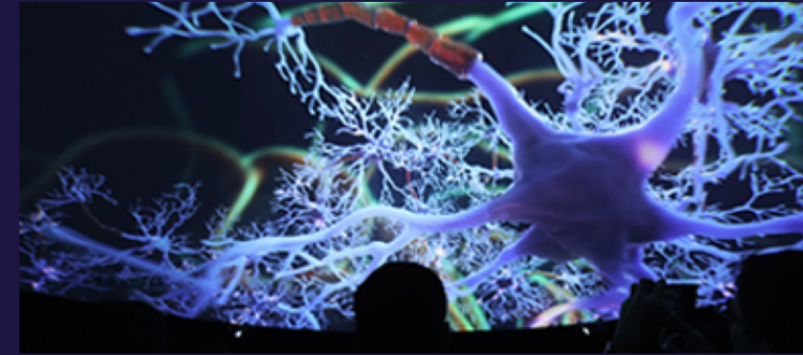
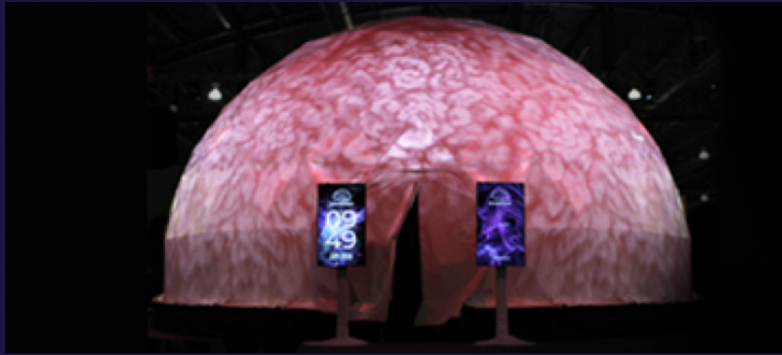
☎ 702-777-7853

What else can we do?

Experiential Exhibits



Led Walls



Lighting Solutions

Projection

Video Solutions

And More!



Special Notes

Encore, its contractors, and subcontractors are not responsible for voltage fluctuation or power failure due to temporary conditions or loose connections. For your protection, you should install a surge protector under/over voltage protector on your computer(s) and/ or other equipment you deem necessary. Encore should make installation of all electrical service. Encore will not be responsible for any damaged or lost equipment, component computer hardware or software and/or any damage or injury to any person, caused by the installation, connection, or plugging into any electrical by persons other than our personnel.

-- NO REFUNDS ONCE SERVICE INSTALLATION BEGINS -- INSTALLATION CANNOT BEGIN UNTIL ORDER IS FINALIZED AND PAYMENT METHOD HAS BEEN RECEIVED

To receive advanced pricing; Encore must receive your completed order, with complete billing information no less than 15 days prior to event load in.